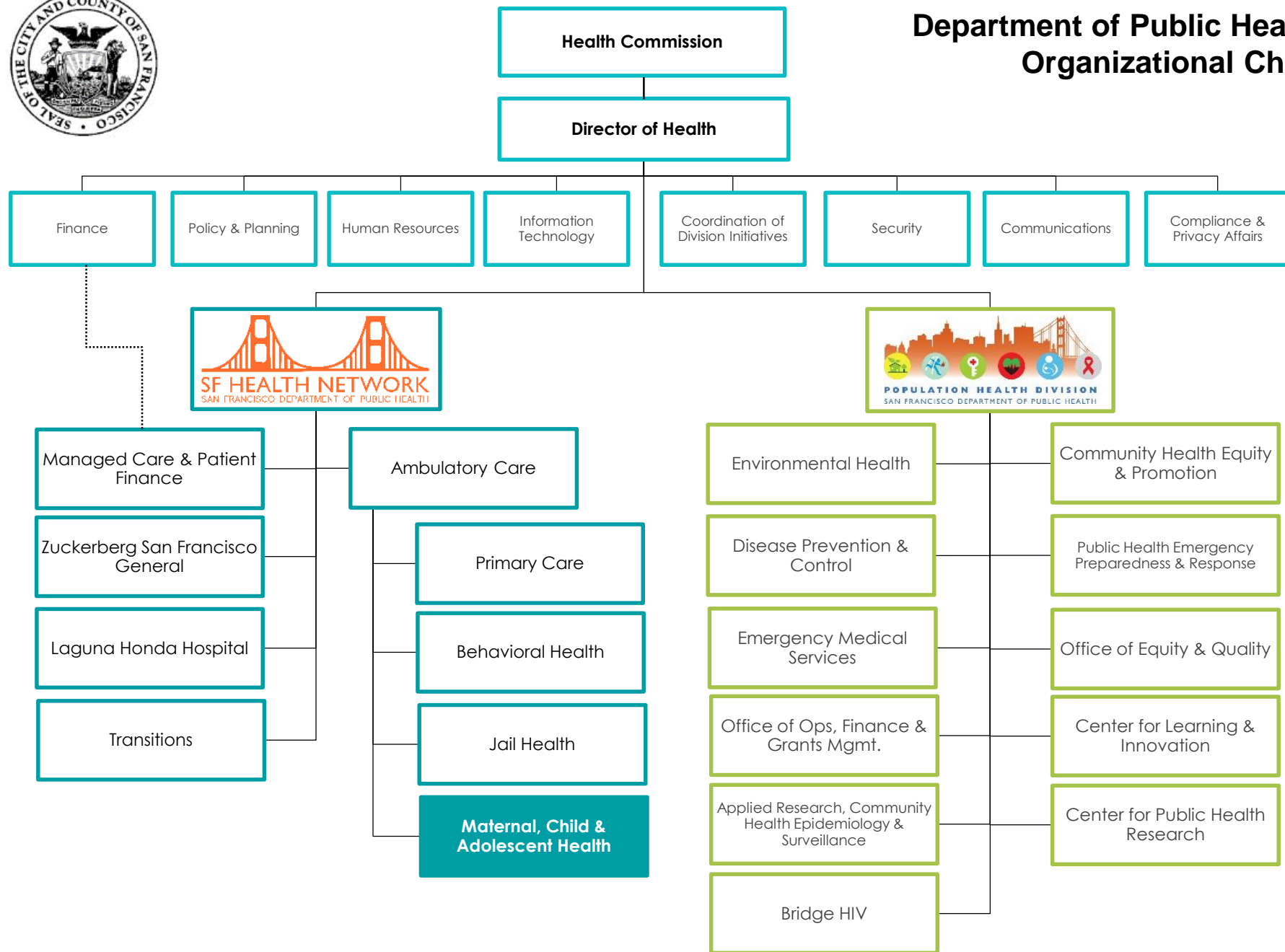


# Maternal, Child and Adolescent Health



# Department of Public Health Organizational Chart



## Maternal Child and Adolescent Health

- serves **vulnerable children and families**
- promotes and protects the health of San Francisco's population of **mothers, infants, children, adolescents and young adults**

## MCAH Update

- Seeking ***True North***
- Program highlights and collaborative efforts
  - **Nurse Home Visiting, Black Infant Health and collaboration with Preterm Birth Initiative**
  - **Child Care Health Program and collaboration with Children's Oral Health Plan**

# MCAH Client Population and SFHN

~25,000  
MCAH  
client count  
(with some  
duplicates)

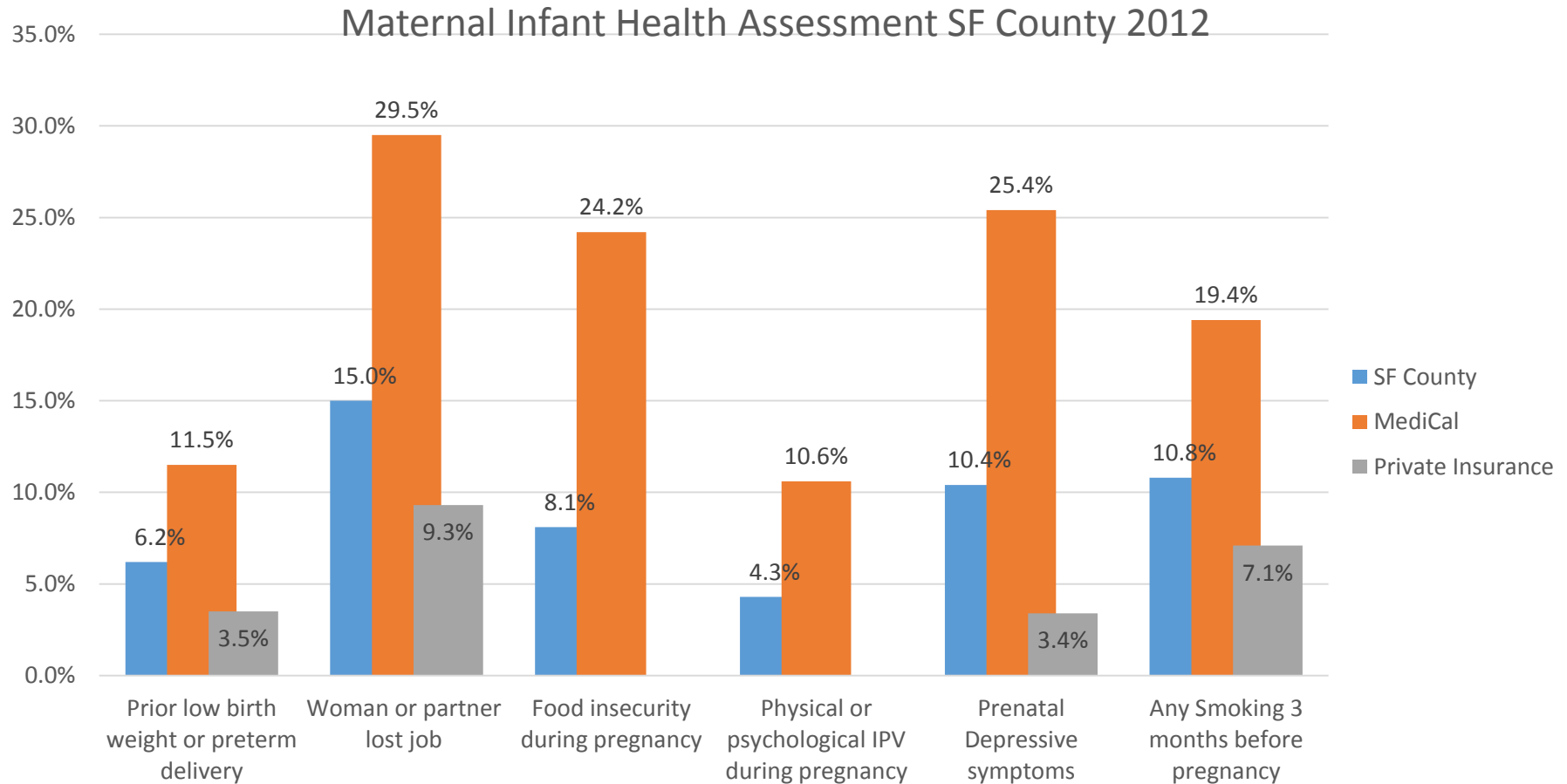
- MCAH Client Population
  - ~82% are enrolled in Medi-Cal<sup>2</sup>
  - >60% identify as Latino/Hispanic and/or Asian
  - ~10% identify as Black/African American
  - >50% are non-English speakers
- >50% of Medi-Cal births in SF occurred at ZSFGH<sup>1</sup>

72% of women  
enrolled in Nurse  
Home Visiting  
programs are  
SFHN members

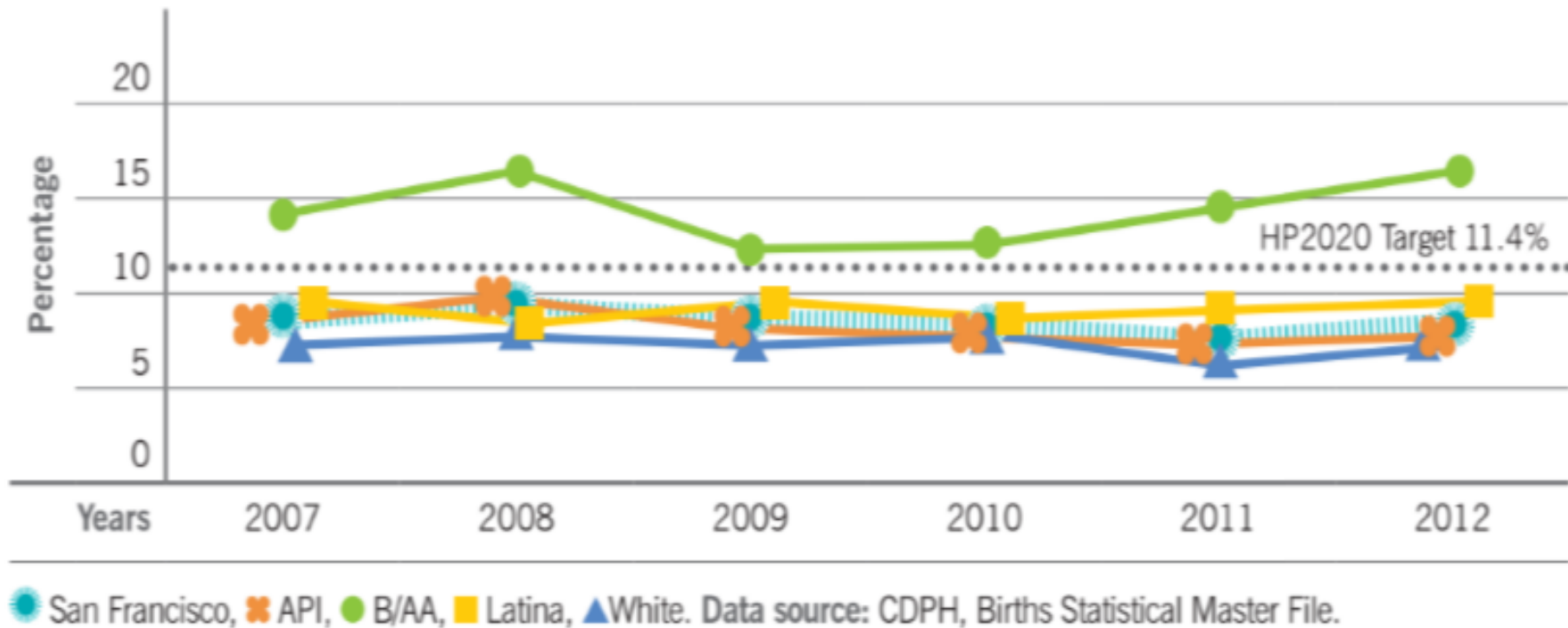
~70% of clients seen at  
Jelani House are SFHN  
members

17% of children  
served by  
Child Health and  
Disability Prevention  
are SFHN members

	Safety	Financial Stewardship	Care Experience	Quality	Workforce	Equity
	<i>Eliminate harm to patients and staff</i>	<i>Provide financially sustainable health care services</i>	<i>Provide the best health care experience</i>	<i>Improve the health of the people we serve</i>	<i>Create an environment that values and respects our people</i>	<i>Eliminate disparities</i>
<b>MCAH (All by Jun 2017)</b>	Reduce preventable employee injuries	Improve timely submission of state mandated reimbursement requirements	Improve client response rate for satisfaction surveys	Improve linkages from prenatal care to MCAH for pregnant women	Improve support and respect among staff	Improve equity in oral health for young children
	Increase the % of MCAH staff with completed ergonomic assessments from 9.9% to 40%	Increase the % of staff who complete MediCal Time study within 15 days from 44% to 64%	Increase % of MCAH clients who have completed and returned client satisfaction survey from 15% to 30%	Increase the % prenatal SFHN members enrolled into MCAH services from 23.7% to 28.7%	Increase the % of staff who "Agree" or "Strongly Agree" that " <i>The people I work with treat each other with respect</i> " from 58% to 63%	Increase the % of children (6mon-6yrs) most at risk for developing caries who receive fluoride varnish application from 71.5% to 76.5%



**Figure B: Live births that occurred before 37 weeks gestation, by ethnicity**



**GOAL:** Improve linkages from prenatal care to MCAH services for pregnant women

**TARGET:** Increase % of prenatal SFHN members enrolled into MCAH Home Visiting programs from 23.7% to 28.7%



# Nurse Home Visiting: Nurse Family Partnership

## What we do

- Follow **first-time mothers** throughout their pregnancy and first two years of life to:
  - Ensure **healthy pregnancies**
  - Improve **child health** and development
  - Help mothers become more **economically self-sufficient**

## Who we serve

- At-risk, first-time mothers throughout **prenatal and postpartum period**
- 293 clients (FY 15-16)
- 141 SFHN members



# Nurse Home Visiting: Field Public Health Nursing

## What we do

- Nurse Home Visiting Program that **partners nurses with families** to provide support for women, infants, and children including:
  - Clinical **assessments** and case management
  - **Education** and support for healthy pregnancies
  - **Guidance** on
    - Caring for newborns
    - Caring for a child with special health needs
    - Self-care
  - **Linkage** to community resources & care

## Who we serve

- At-risk **prenatal and postpartum women** and their newborns, chronically ill infants, children, and adolescents
- 836 clients (FY 15-16)
- 670 SFHN members



## What we do

- Provides **support and education** throughout pregnancy for **African American pregnant women** to promote the health of mothers and babies
- Conduct **group education and individual client services** to address issues including:
  - Chronic stress
  - Social isolation
  - Limited access to services
  - Racial inequities
  - Economic hardship
  - Disempowered communities

## Who we serve

- African American women during **prenatal and postpartum period** within San Francisco
- 106 clients (FY 15-16)





**GOAL:** Create an environment that values and respects our people

**TARGET:** Increase % of staff members who Agree or Strongly Agree that the people I work with respect each other from 58% to 63%

# Workforce: Management Effectiveness Survey

**Survey conducted:** Feb - April 2016

**66% response rate** (109 out of 164 staff)

## Results:

- Bright spots: Leadership and Valuing behaviors
  - Trustworthy
  - Protects confidentiality
- Areas for improvement: Communication and Valuing behaviors
  - Dealing with conflict
  - Favoritism

## What happens next:

- Results disseminated to managers and staff
- Managers set professional development goals for themselves
- Regular one-on-ones, coaching, and support for managers

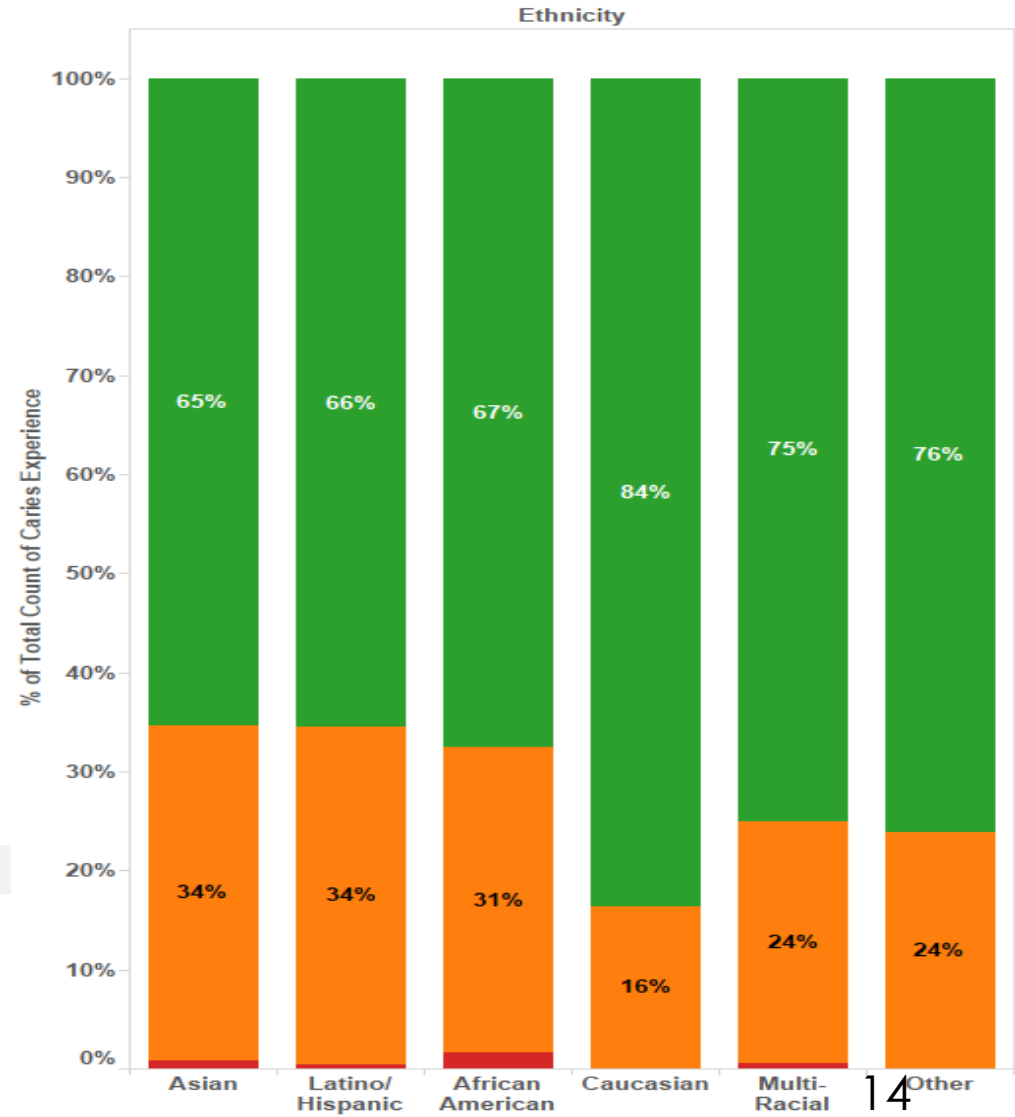
# Equity: Oral Health

In Fiscal Year 15-16, nearly 30% of children of color who were screened by the Child Care Health Program experienced Class 2 or 3 caries.



## Caries Experience

- Class 1
- Class 2
- Class 3



**GOAL:** Improve equity in oral health for young children

**TARGET:** Increase % of children (ages 6 mon - 6 yrs) most at risk for developing caries who receive fluoride varnish application from 71.5% to 76.5%

# Child Care Health Program

## What we do

- Conduct **health screenings** for early detection and kindergarten readiness:
  - Dental
  - Body Mass Index
  - Hearing
  - Vision
- Provide health and safety consultation, training, and disaster preparedness for **childcare providers and families** in targeted San Francisco neighborhoods.

## Who we serve

- 1,794 children ages 0-5 years
- Children enrolled in First 5 Child Care Centers:
  - Low-Med income

